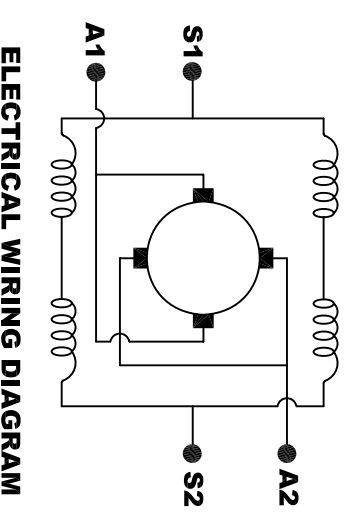
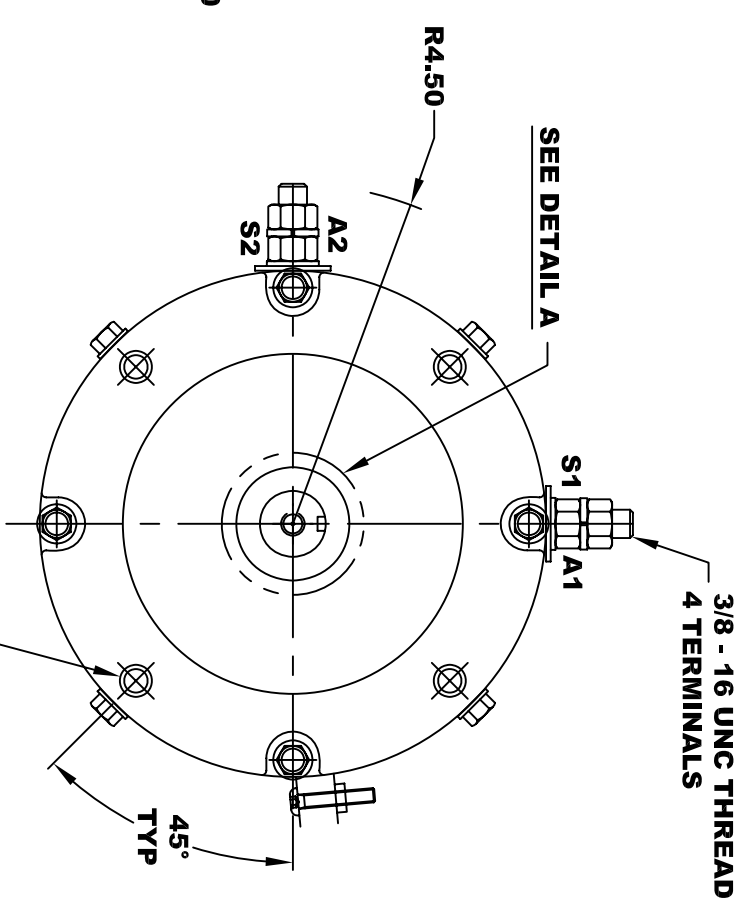
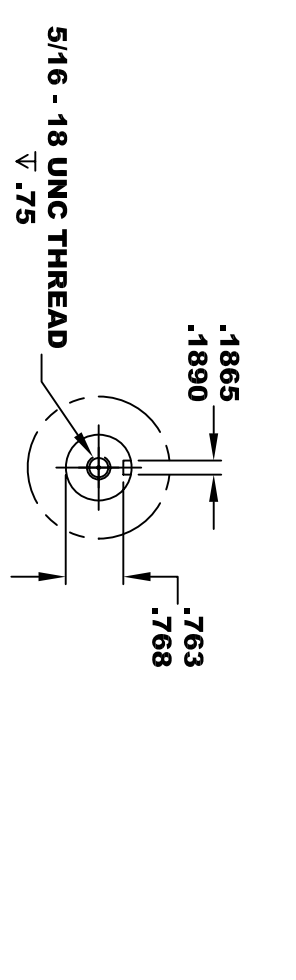
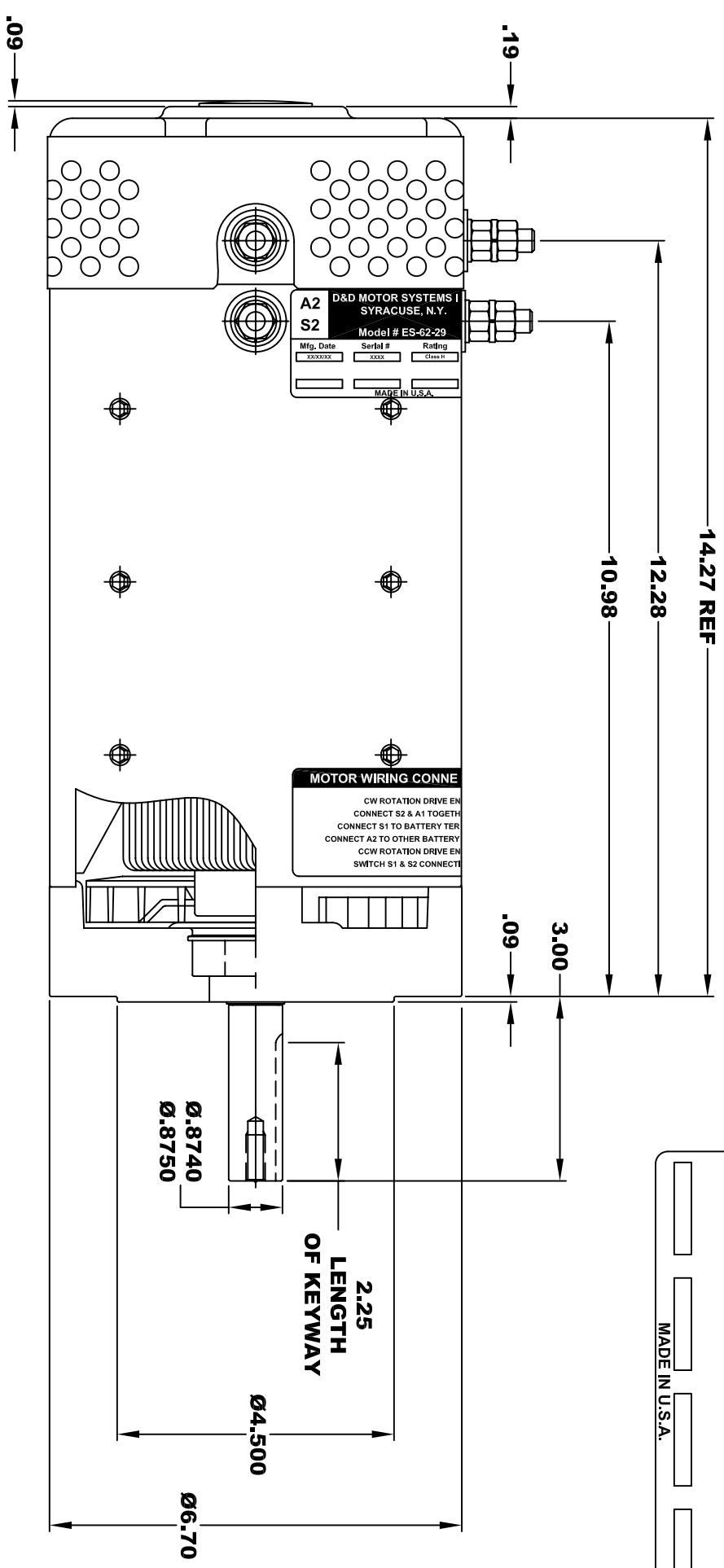


<b>D&amp;D MOTOR SYSTEMS INC.</b>			
SYRACUSE N.Y.			
<b>A2</b>	<b>Model # ES-62-29</b>		<b>A1</b>
<b>S2</b>	Mfg. Date	Serial #	Rating
	XXXXXX	XXXX	Class H
			Voltage
			XX
			MADE IN U.S.A.

**TORQUE SPECIFICATION FOR  
POWER CABLE SECURING TOP NUTS  
3/8-16 UNC - 140 IN / LBS MAX**



**MOTOR WIRING CONNECTIONS:**  
**CW ROTATION DRIVE END**  
**CONNECT S2 & A1 TOGETHER**  
**CONNECT S1 TO BATTERY TERMINAL**  
**CCW ROTATION DRIVE END**  
**CONNECT A2 TO OTHER BATTERY TERMINAL**  
**SWITCH S1 & S2 CONNECTIONS**

**MOTOR WEIGHT: 76 LBS**  
**CLASS "H" INSULATION**  
**PERFORMANCE SPEC: 29**

THIS PRINT IS THE PROPERTY OF D&D MOTOR SYSTEMS INC.  
 DO NOT SCALE  
 WORK TO DIMENSIONS  
 TOLERANCES UNLESS OTHERWISE SPECIFIED ARE AS FOLLOWS  
 .XX \_\_\_\_\_ .01  
 .XXX \_\_\_\_\_ .005  
 .XX ROUGH CASTING \_\_\_\_\_ .03  
 HOLES \_\_\_\_\_ -.001 / +.006  
 ANGLES \_\_\_\_\_ 0°30"

**D & D MOTOR SYSTEMS INC**

# MOTOR OUTLINE

SIZE	DRAWN DATE	RELEASE DATE	DWG NO. / PART NO.	REV
B	1-28-16		ES-62-29	
SCALE	STF	DRAWN BY	MJG	REV DATE